



Introducing SAP Crystal Server 2011
 60-Day Free Trial »



Getting Started With Dashboards Dashboards Articles Vendor Directory

search... [GO](#)

[Home](#) » [Digital Dashboards](#) » [Screenshots](#) » Panopticon Market Risk Dashboard

Tuesday, August 30, 2011

SITE SPONSOR

Panopticon Market Risk Dashboard

by Hugh Heinsohn, VP/Director, Panopticon Software AB

Tuesday, January 26, 2010

Tell Us About Your Dashboard Experiences!



Take Dashboard Insight's Survey

Dashboard INSIGHT

With the **Dashboard Insight Newsletter**

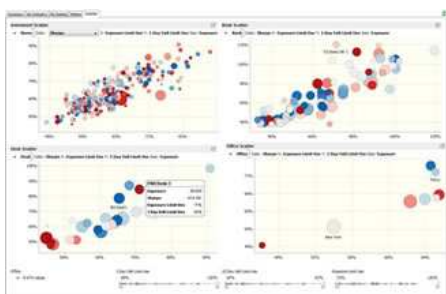
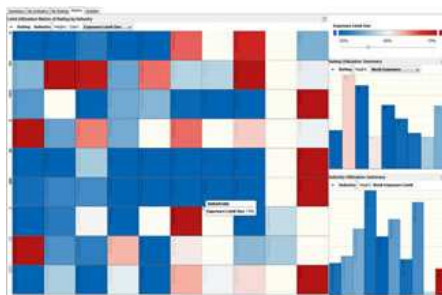
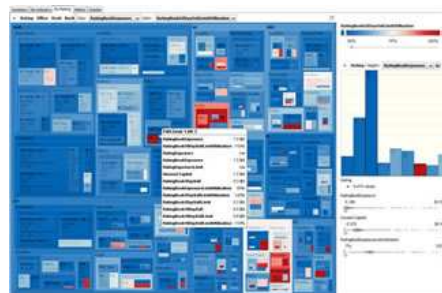
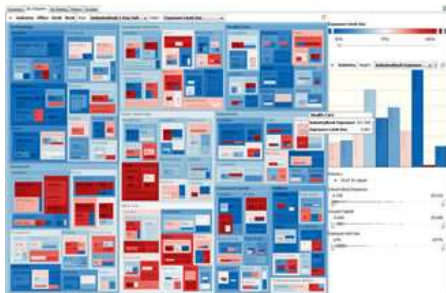


SITE SPONSOR

This Dashboard presents Market Risk incorporating Treemap, Heat Matrix, Barseries, and Scatter Plot data visualizations.

This Dashboard is designed for use by financial services users who must monitor and analyze market risk data for the purposes of making buy and sell decisions for equity and debt instruments.

Treemaps make it easy to spot outliers and help you focus on the most serious opportunities and problems. Barseries let you compare the Value at Risk and other factors. The Heat Matrix tab lets you see how the risk profiles for different industries and ratings categories are correlated with each other. The Scatter Plot tab provides an overall view of the correlations between Exposure Limit Use and Value at Risk at four different levels simultaneously. The Dashboard incorporates Filters that allow you to focus on specific Value at Risk ranges, offices, desks, and countries.



click on images for full size version

[Site Map](#) | [Contribute](#) | [Privacy Policy](#) | [Contact Us](#) | [Dashboard Insight](#) © 2011

Typical applications for Panopticon in financial services applications include:

- Algorithmic trading monitoring
- Equity analysis
- Portfolio attribution, performance and risk monitoring and analysis
- Pre-trade analytics
- Trader performance monitoring

Panopticon information visualization technology supports visual monitoring and fast analysis of large datasets in financial services, telecommunications, engineering, consumer packaged goods, industrial manufacturing, and retail applications. The company's Developer SDK allows programmers to embed Treemaps, Heatmaps and other effective business intelligence capabilities into their own enterprise applications. Panopticon EX is a fully productized white label solution supporting rapid deployment to desktops and the web. Clients include information services company Thomson Reuters, financial giant JP Morgan Chase, project management firm Deltek, and telecommunications systems provider Polystar. The company has offices in New York, Boston, London and Stockholm.

For more information please contact:

Hugh Heinsohn
 Panopticon Software AB
 +1 818 903 5250
hugh.heinsohn@panopticon.com



[Like](#) Be the first of your friends to like this.

[Other articles from this author](#)

Discussion:

No comments have been posted yet.

To post a comment to this article, please login first.